

# Skinner's Log Cabins

## What to expect from your log cabin

Thank you for choosing a Skinner's Log cabin, we have put together this leaflet to show you what to expect from your Log Cabin.

Your log cabin is produced from Spruce timber, this is a natural product and has been sustainably sourced, with all natural wooden products a certain amount of blemishes, splits, knot's, twists, sap pockets etc will be present. These are all perfectly normal and our common occurrences sheets show some of these.

A flat and level base is essential for a Log Cabin as the timbers will mould themselves to the base, if the base is not flat and level the cabin doors/windows will not operate properly, the roof will not fit etc. The free treatment supplied is a anti fungal treatment and depending on the size of your building more tins maybe required, this is NOT a weather proofer.

Weather proofing is essential, your cabin is bare wood!! We recommend Protek Royal Exterior, this has a uv protector and excellent weather proofing, the sun/rain weather will affect your cabin, if it is not treated problems can occur.

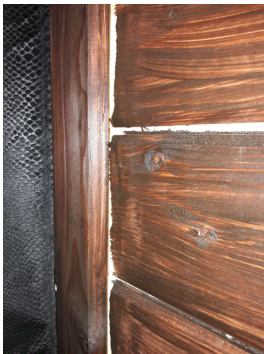
Painting the doors inside and out, and around the edges is also essential to protect them.

Your cabin will move! It will shrink slightly, expand slightly this is all perfectly normal and happens over changes in the weather, and humidity levels in the atmosphere, when this happens loosen off and remove any holding screws with washers, (to allow the building to shrink/expand/settle). The gap which can occur through the screw holding the log in place might take a week or so to close after the screw is removed (pic1/2) then re-paint the white logs.

Following a few simple steps will provide you with a long lasting enjoyable building for many years.



Adjustable hinges on doors, 4mm allen key is used to adjust doors that may have dropped/swollen



Example of inadequate paint, paint not worked into the grooves and seams, not enough coats



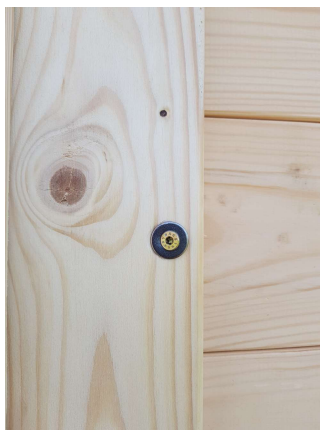
Example of logs opening due to drying out, also lack of paint, this will settle back.



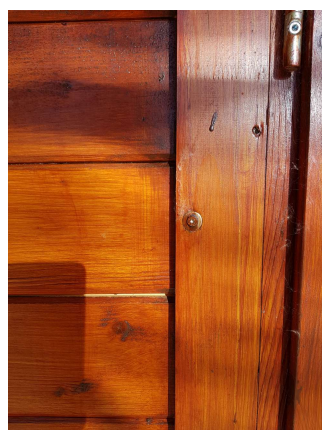
Some timbers will have small splits in them, this is perfectly ok, these are not structural defects and will not affect your building



Example's of logs fitted, these are normal, simply fill the ends prior to decoration

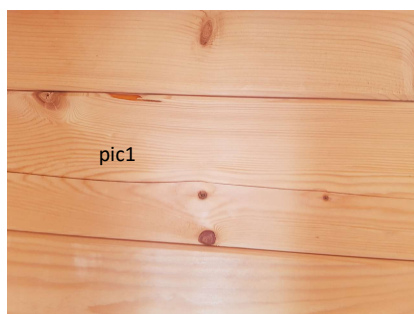


pic1



pic2

Example of screws with washers, remove these to allow boards to shrink/expand. As seen in pic2 the log is being held and a gap is starting to form, this the time to remove the screw to allow the building to settle, once settled replace screw.



pic1



pic2

Example of splits in wood, these are not structural defects, these are normal in timber and should be filled.



Example of a staggered log, perfectly normal, this can occur with many logs, as wood is a natural product and slight expansion /shrinkage is normal.